



四川建築職業技術學院

SICHUAN COLLEGE OF ARCHITECTURAL TECHNOLOGY

2016屆畢業生

就業質量年度報告

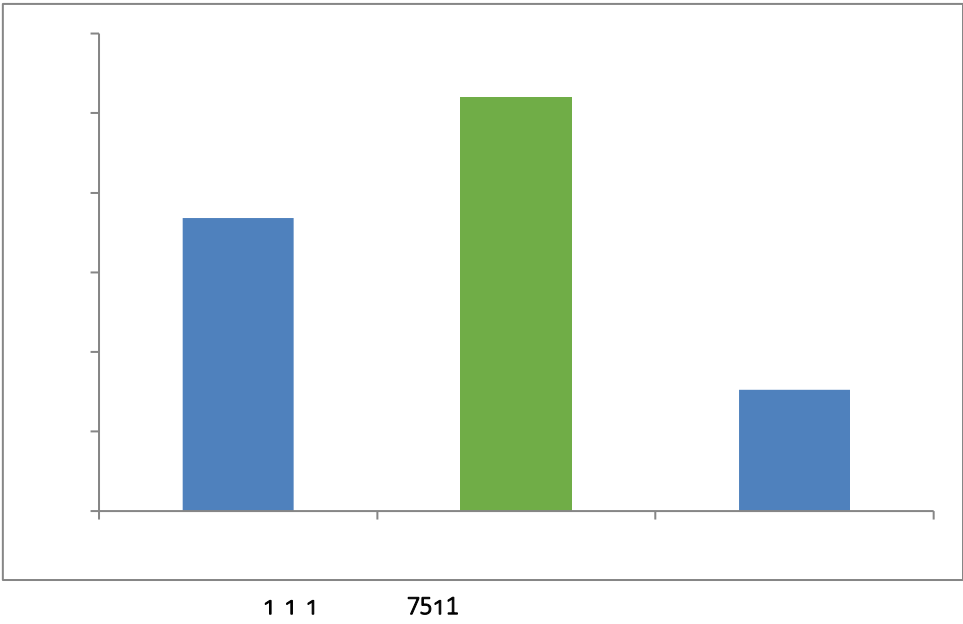
二〇一六年十二月

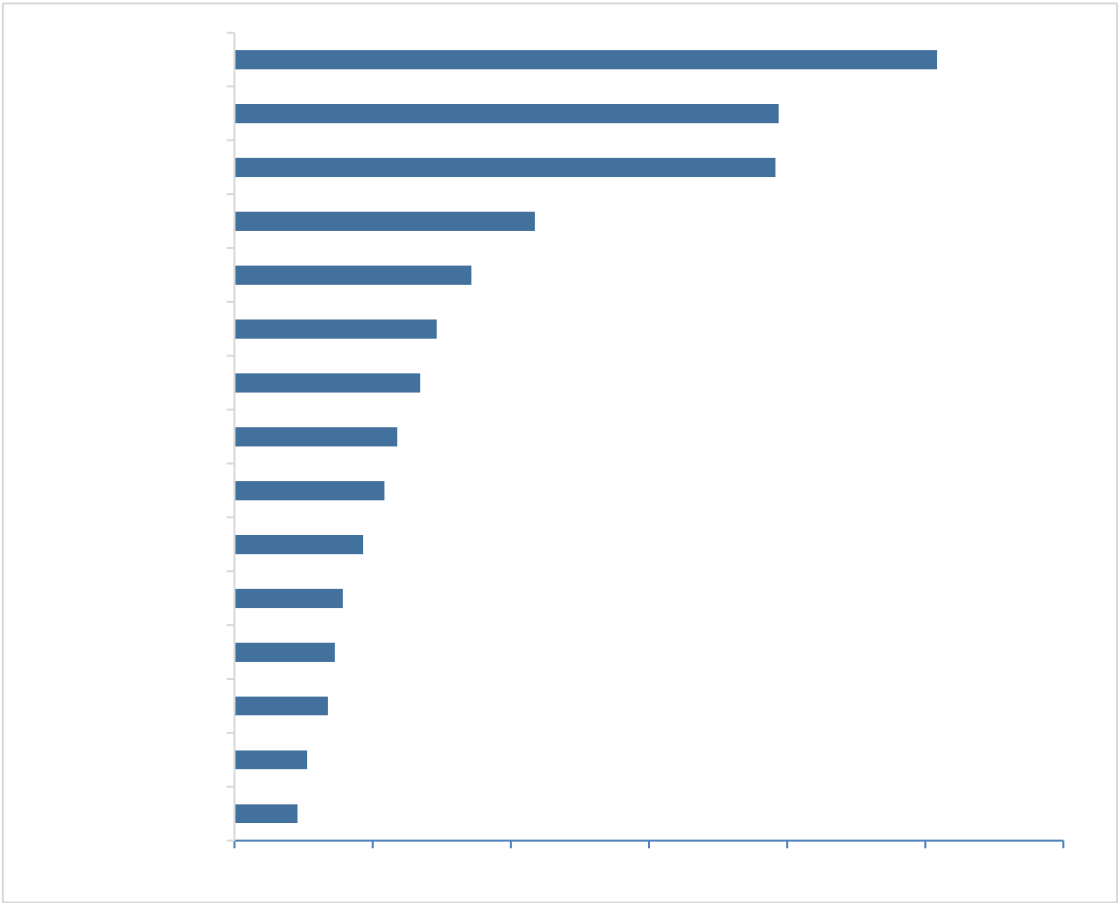




第一章 就业创业状况	1
.....	1
.....	5
.....	14
.....	14
第二章 就业质量	17
.....	17
.....	17
.....	20
.....	20
第三章 求职过程	21
.....	21
.....	21
第四章 就业创业工作评价	22
.....	22
.....	22

.....	23
.....	24
第五章 教育教学过程评估.....	25
.....	25
.....	25
.....	26
.....	27
.....	27
第六章 母校满意度和推荐度.....	28
.....	28
.....	30
第七章 用人单位评价	31





1 1 7 7511

1 1 3 7511

	1059		43
	983		42
	192		42
	177		41
	141		38
	118		38

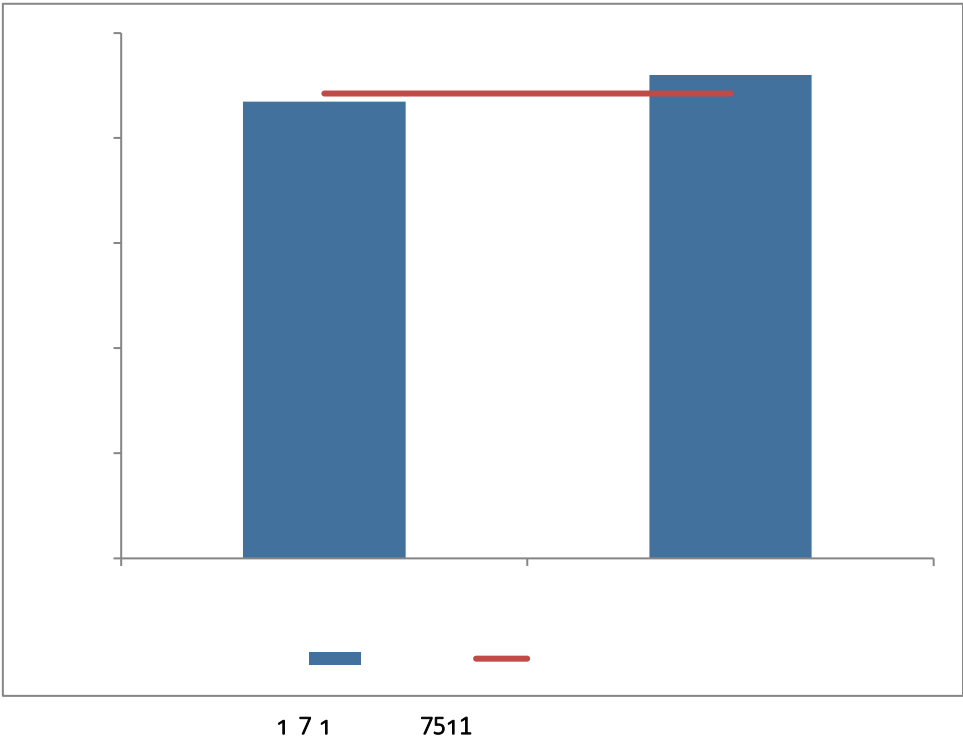
	113	及	38
	106		35
	100		35
	94		35
	91		35
	89		34
	87		34
	81		32
	79		31
	76		30
	68		30
	67		29
定	66		27
	63		27
	61		26
	61		26
	60		24
务	57	务	23
	55		21
务	53		18
	49		17
	45		14
	44		

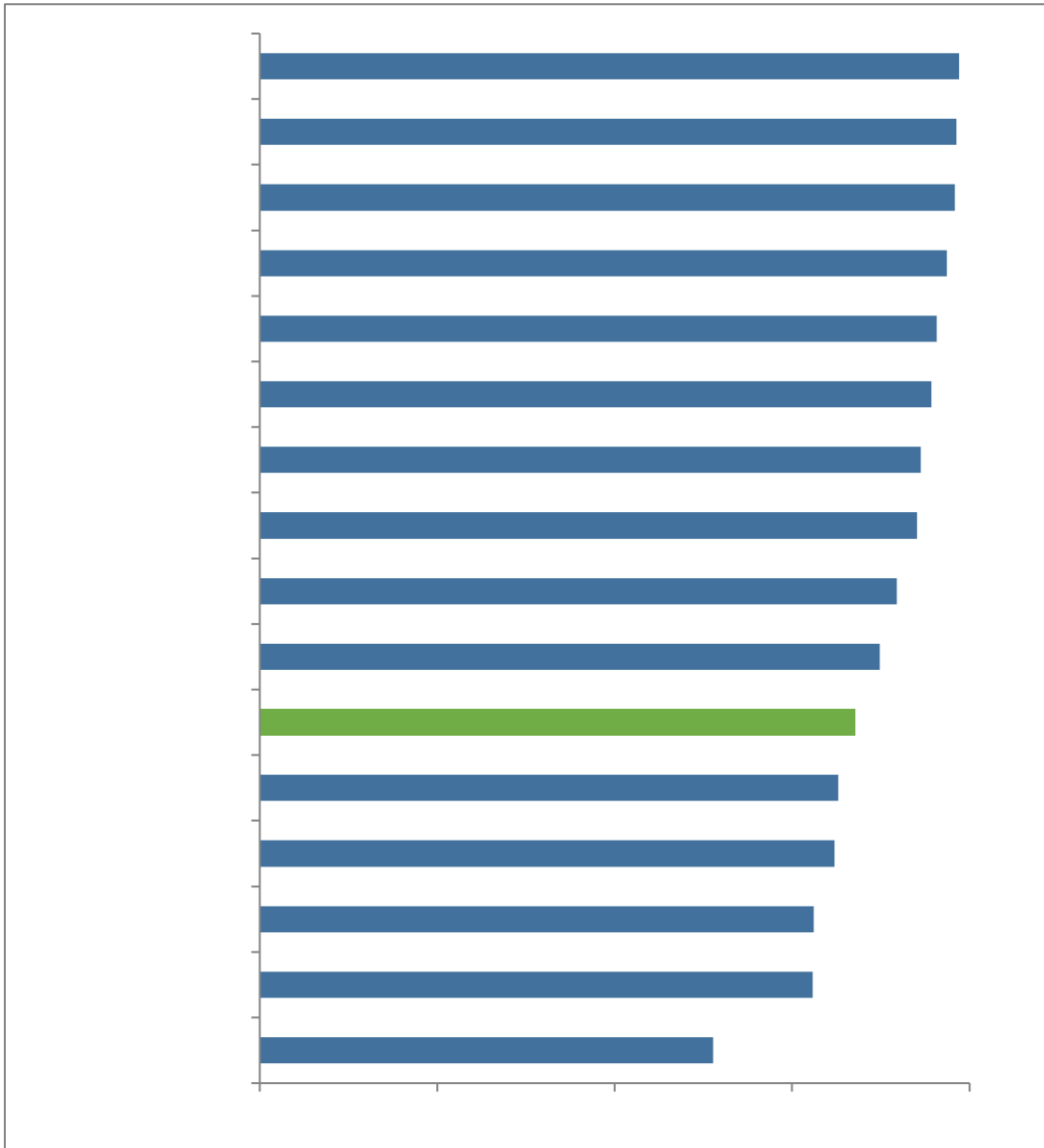
1 1 9 7511

	0		
	0		1

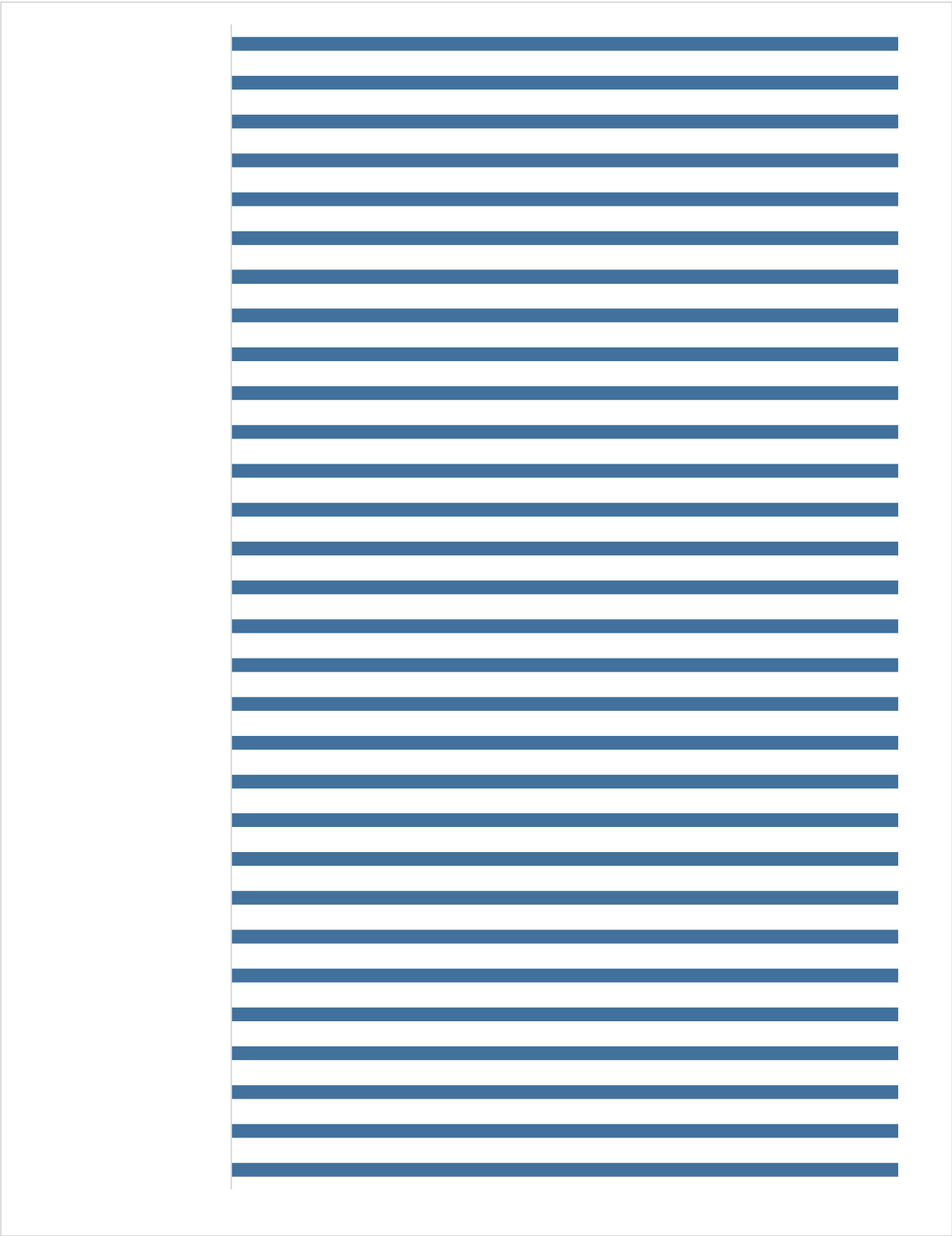


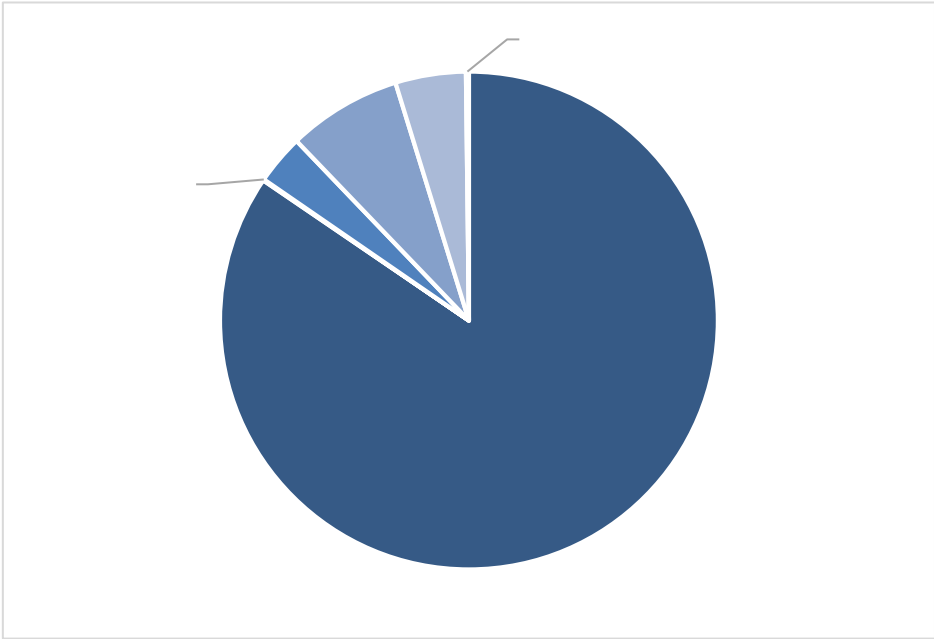
			0
	0		





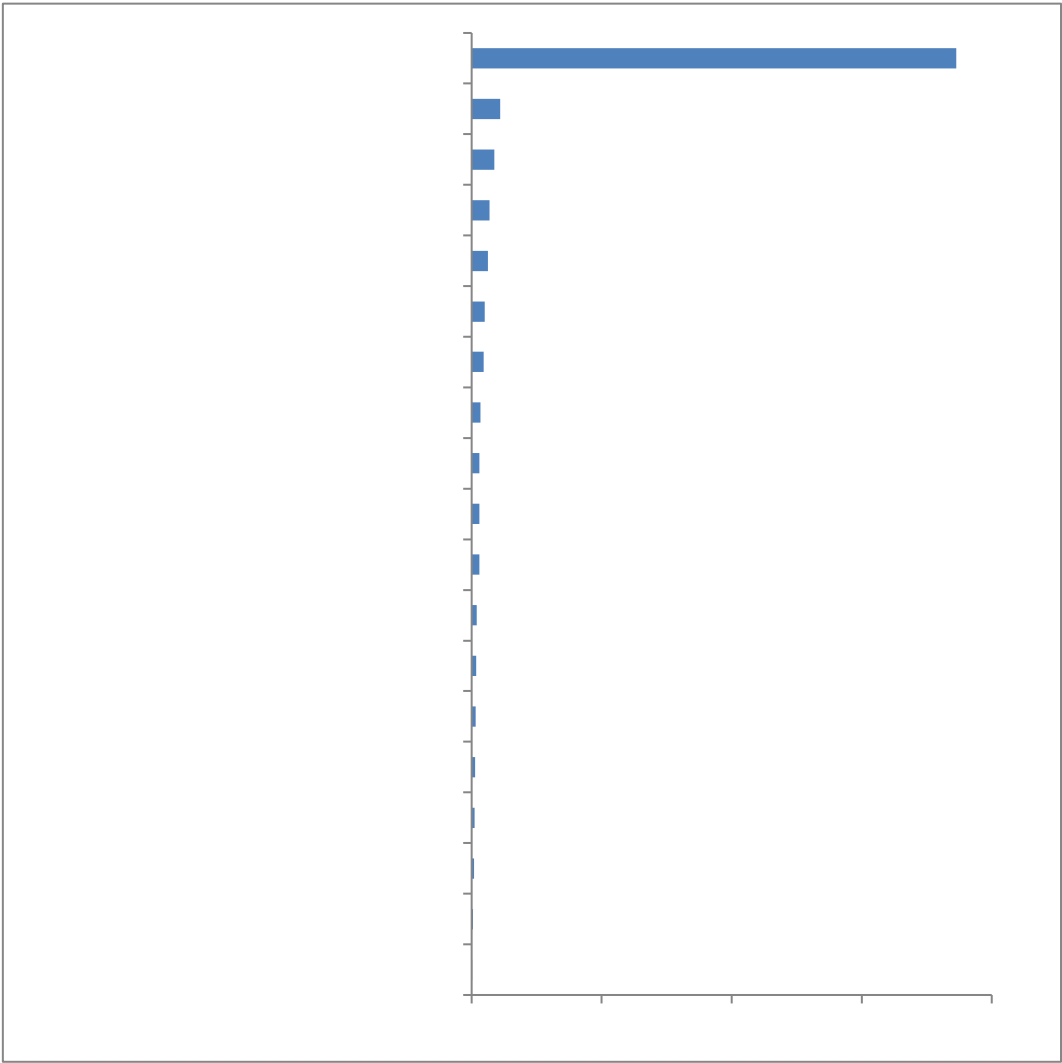
1 7 7 7 5 1 1



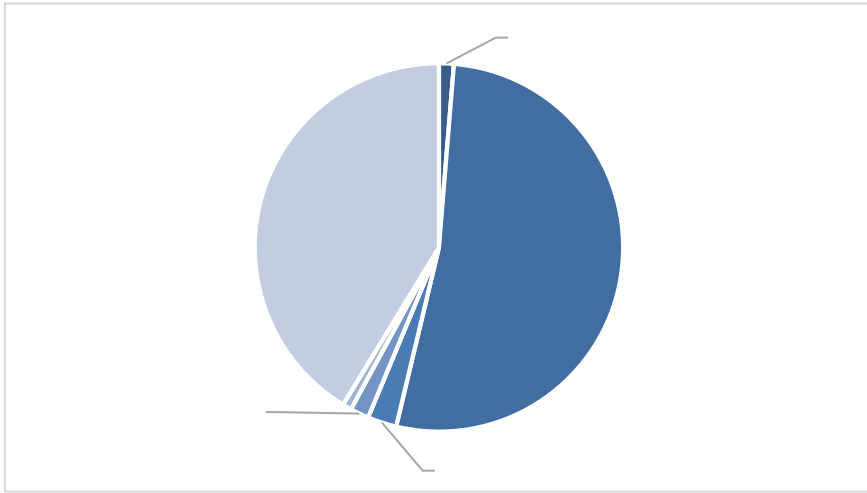


1 7 9

7 5 1 1



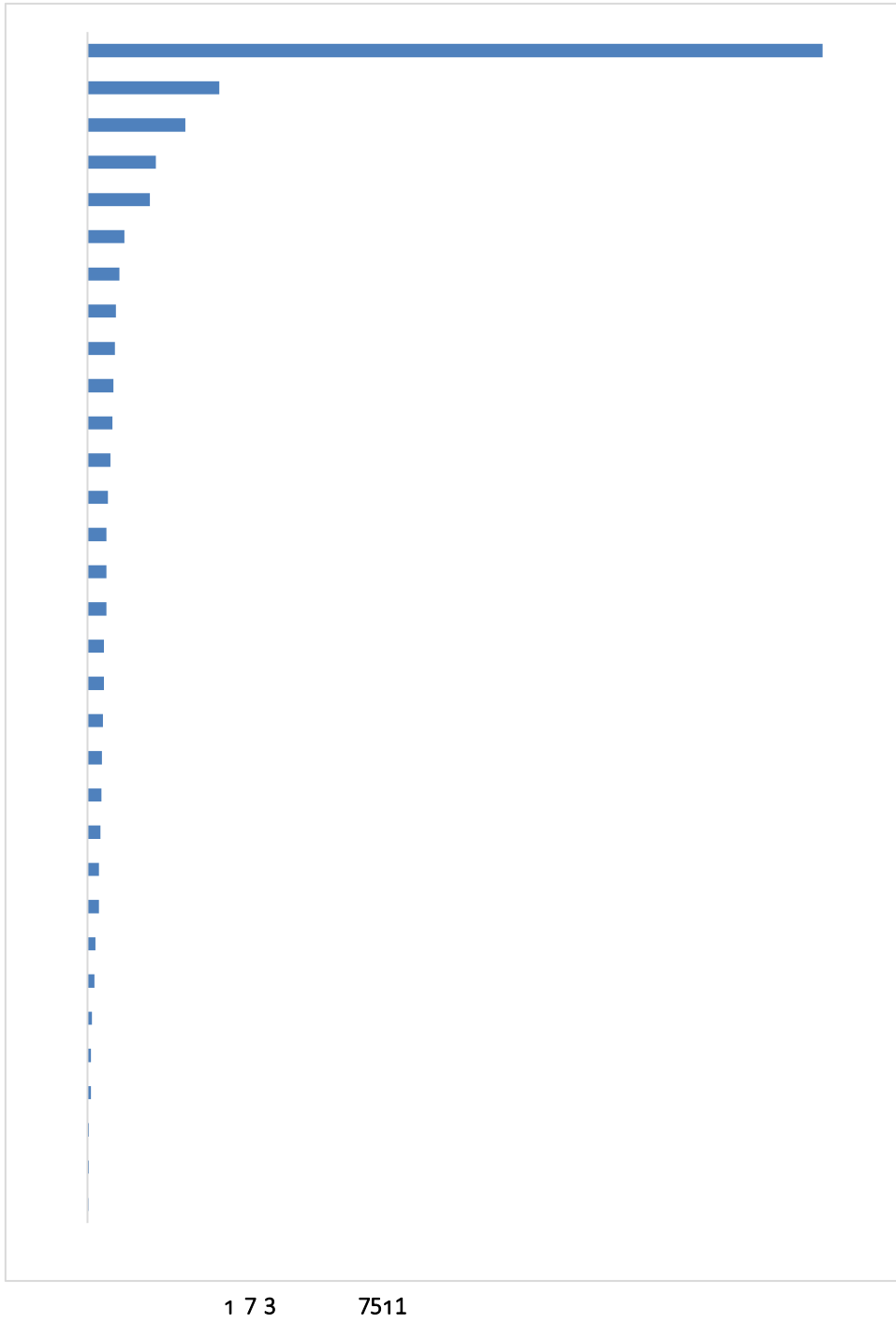
170 751



1 7 1 7511

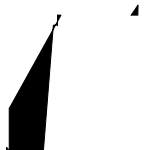
1 7 2 7511

1.

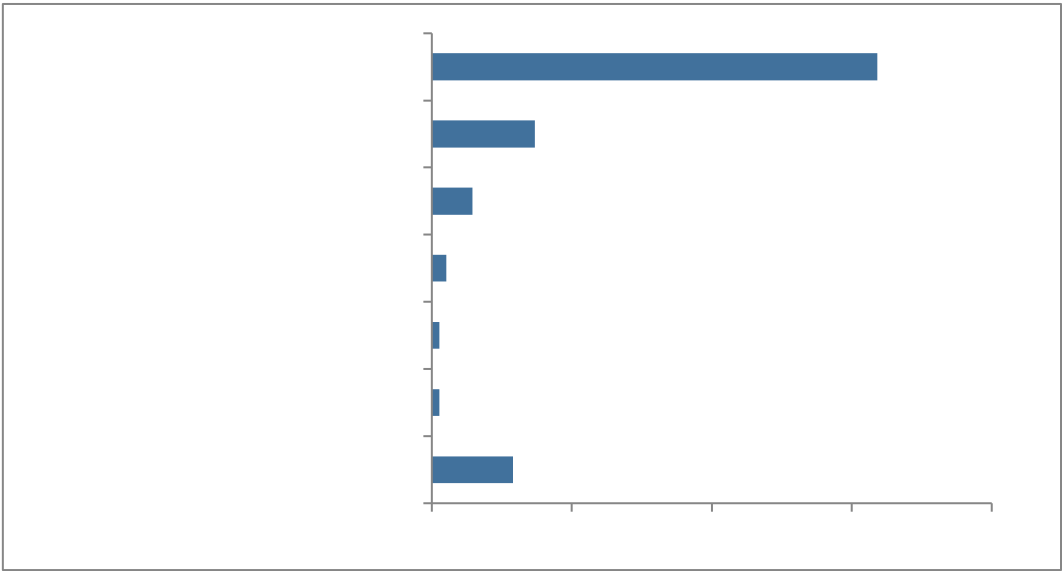


2.

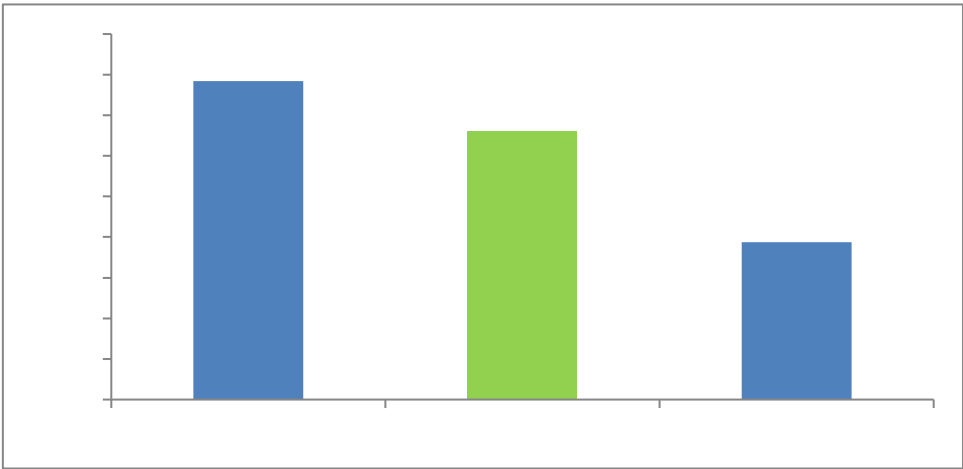
1 7 7511



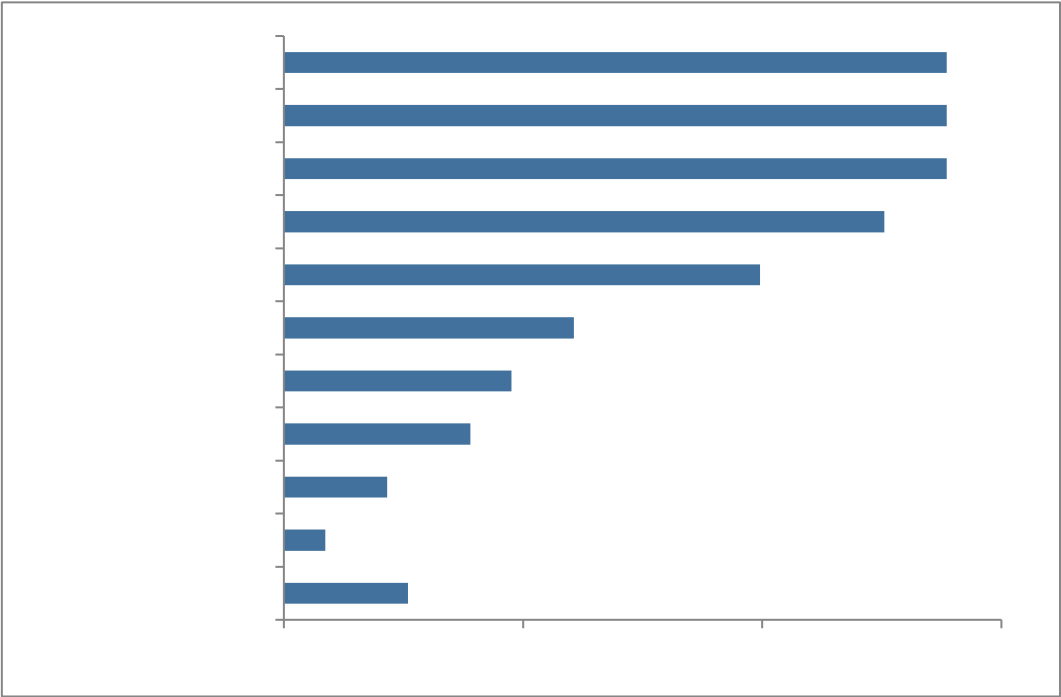
13



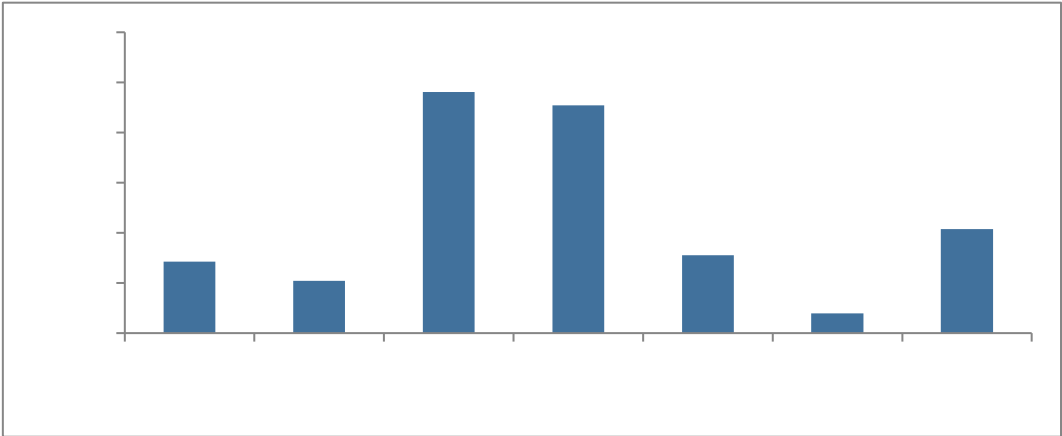
1 3 1 7511



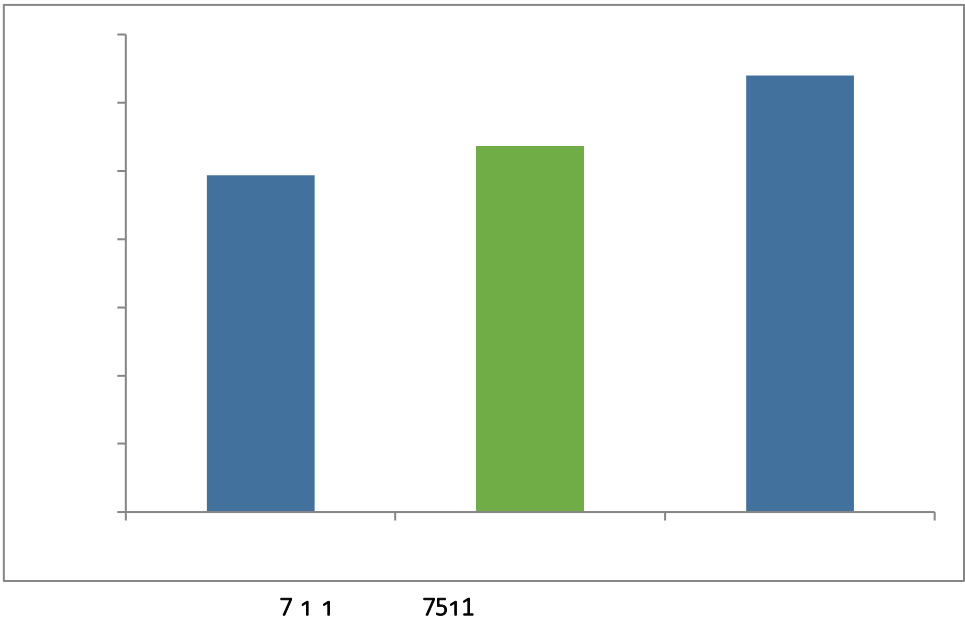
1 9 1 7511

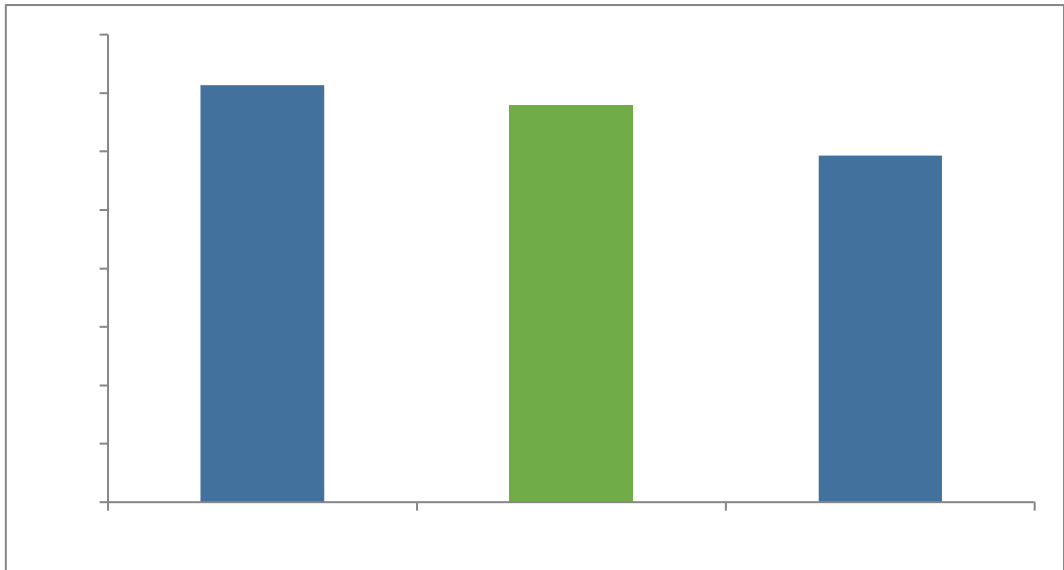


1 9 7 7511



1 9 3 7 5 1 1



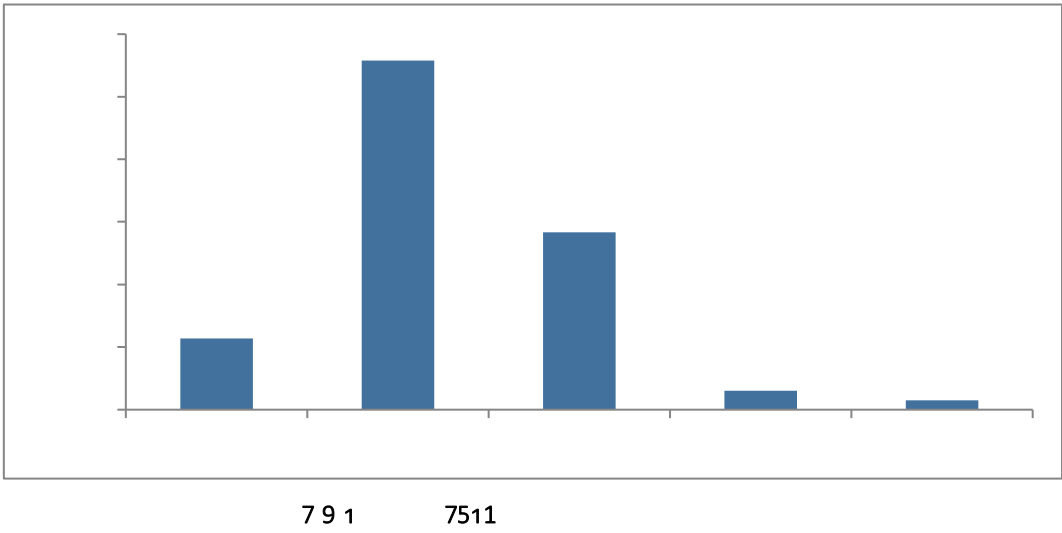
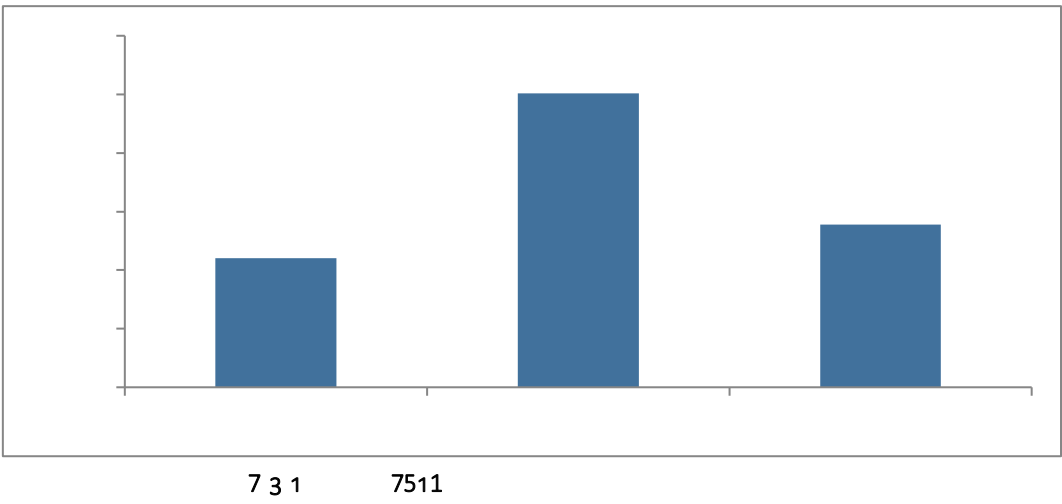


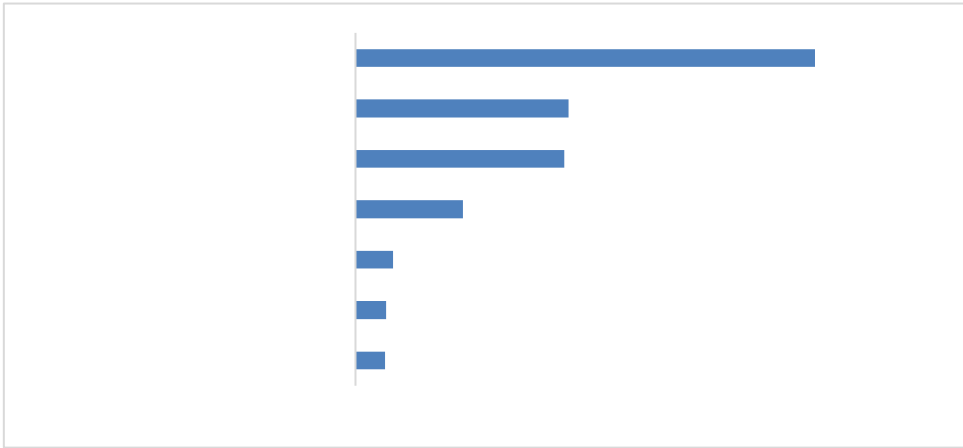
7 7 1 7 5 1 1

7 7 7 7 5 1 1

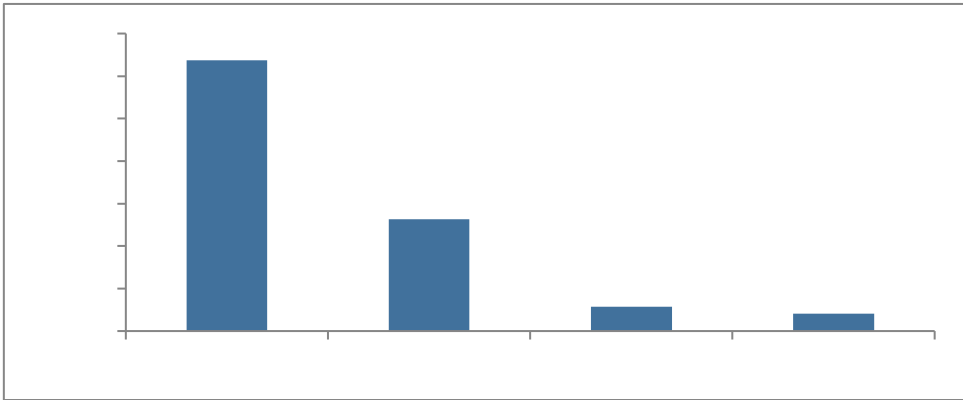
	384		2633
	3678		257
	3573		2525
	33		2512
	3277		2505
	3 25		2477
	2878		2414
	2845		2345
	2845		2314
	2818		2313
	2777		2306
	2757		230
	2732		23 5
	265		23
	264		2248

	2233		2013
	2203		2 77
	22 1		2 53
	2180		2 23

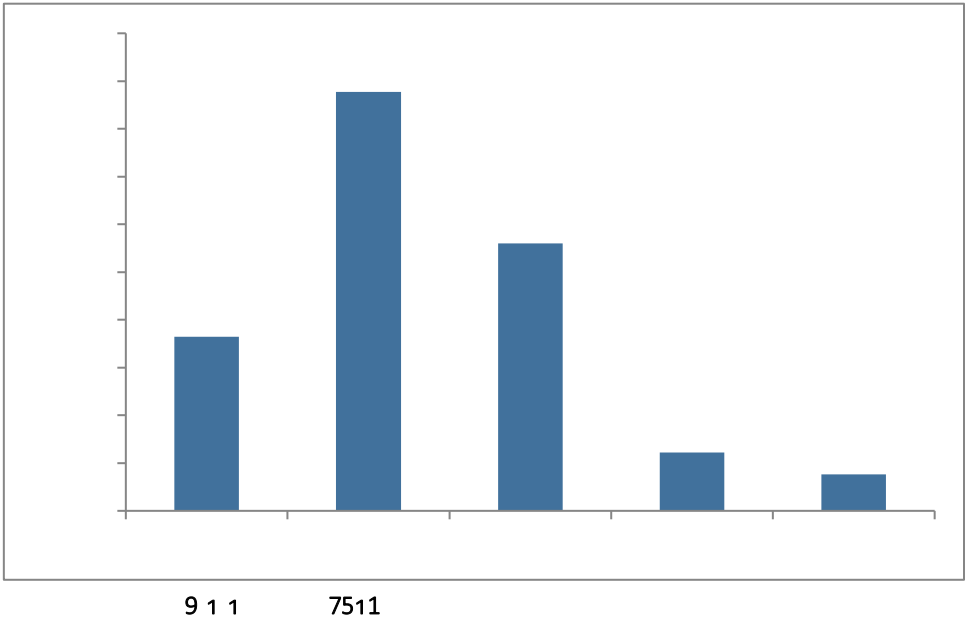


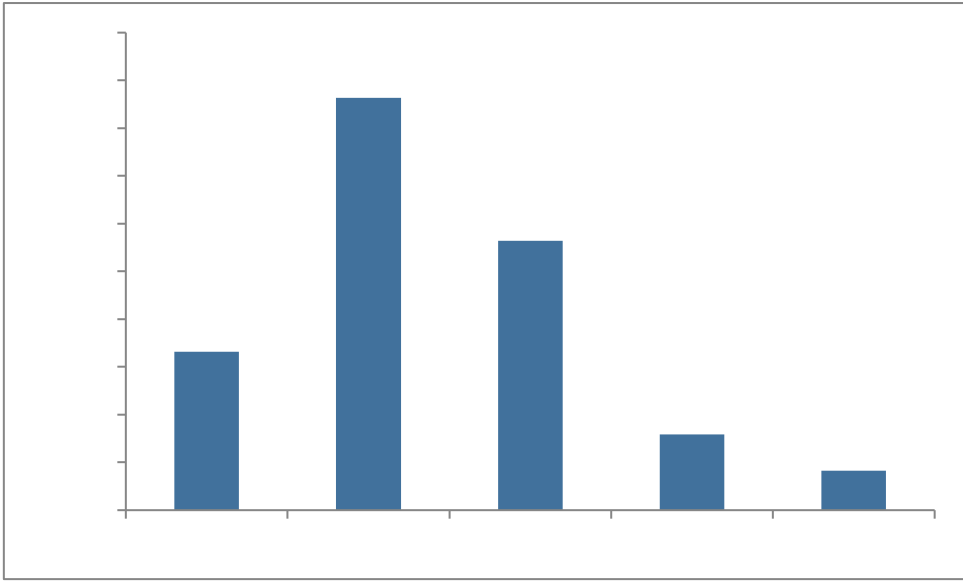


3 1 1 7511

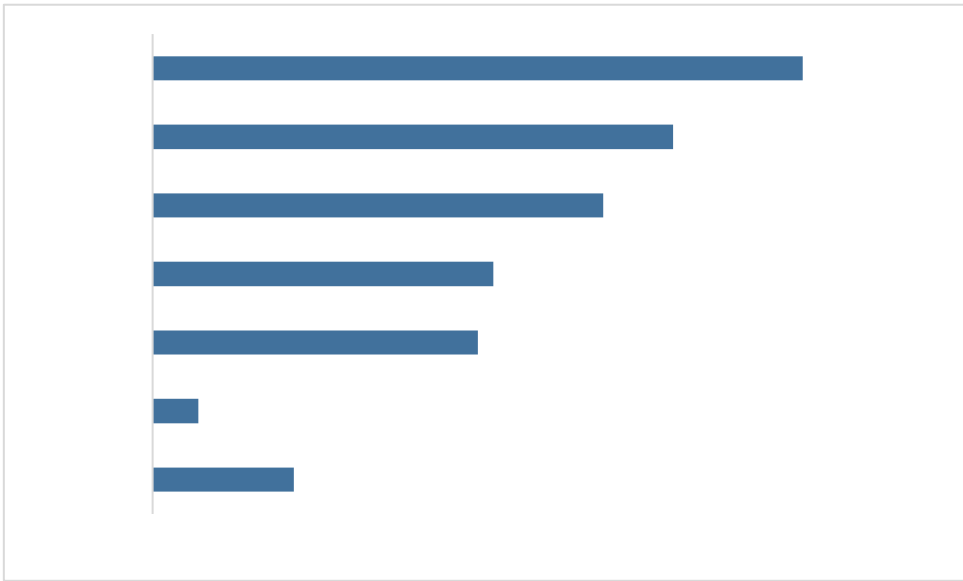


3 7 1 7511

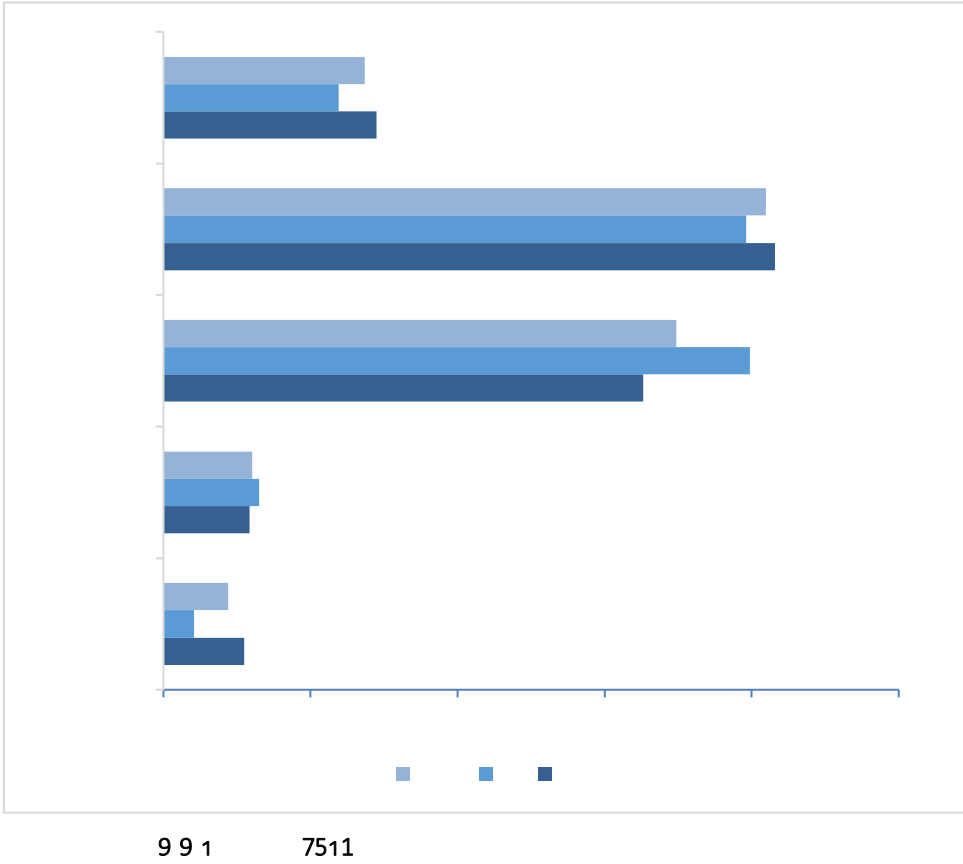


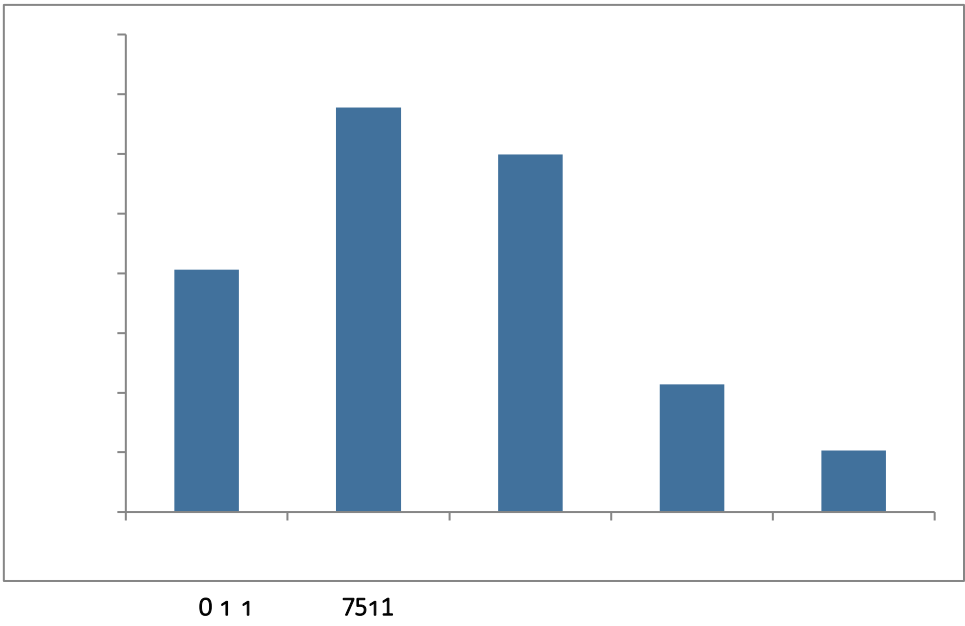


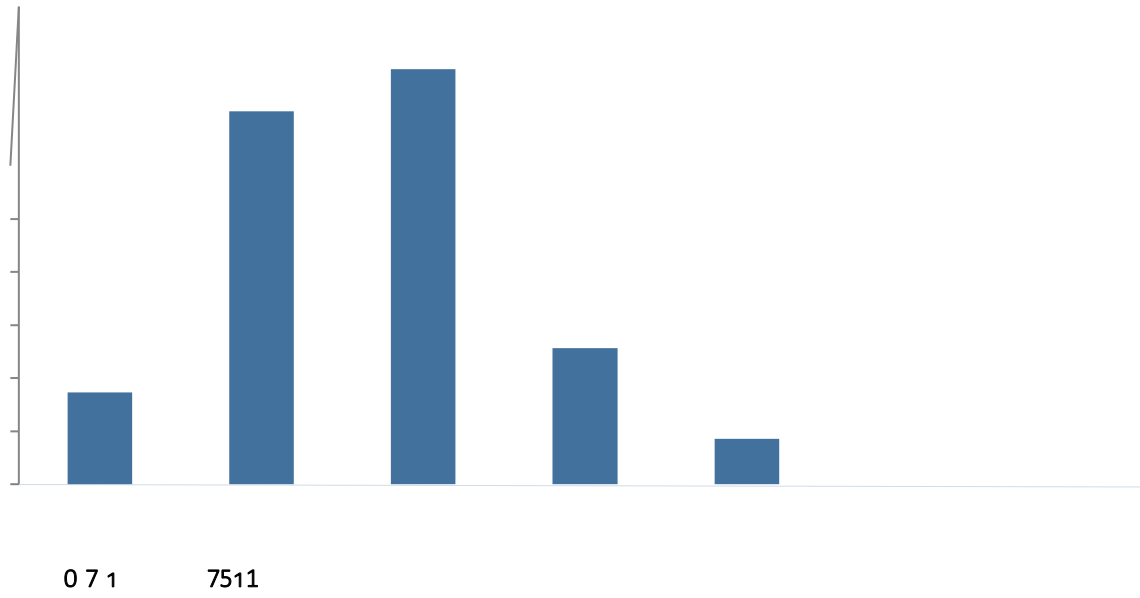
9 7 1 7511



9 3 1 7511







88.37% 2016
37.36%

9.36%

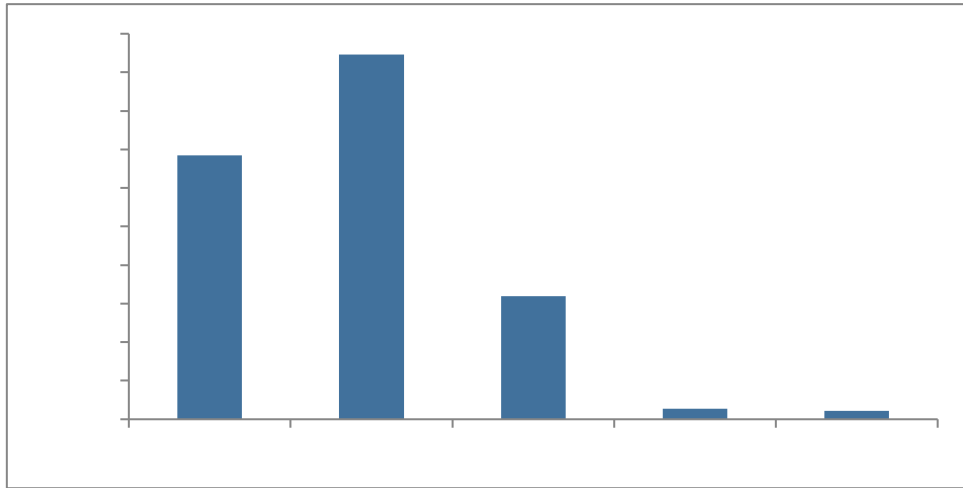
0 3 1 7 5 1 1

2016

97.51%

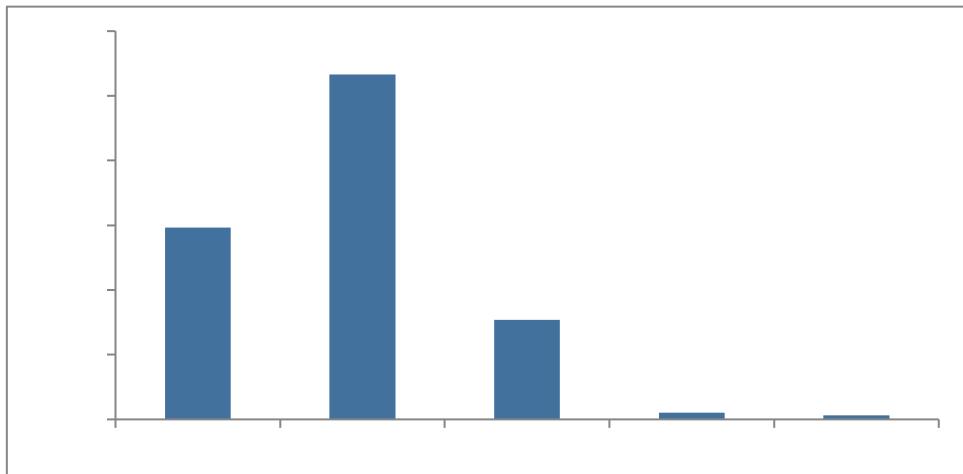
34.22%

47.32%



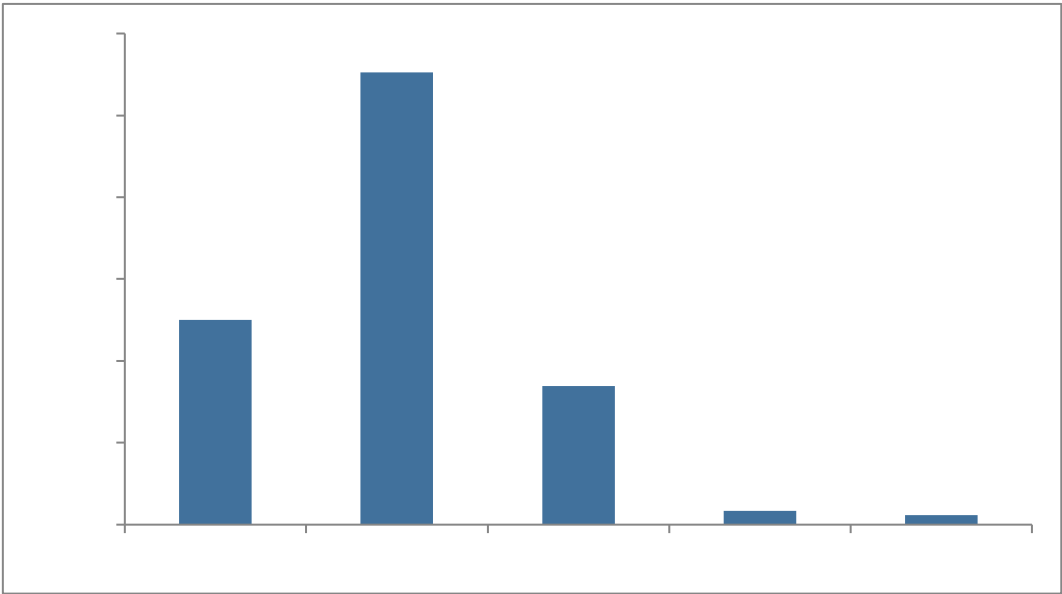
091

7511

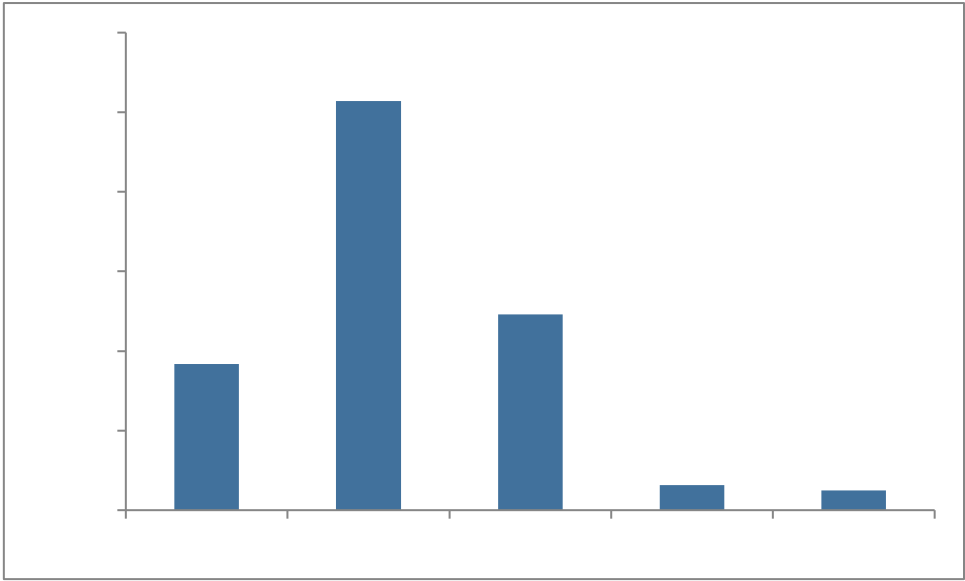


001

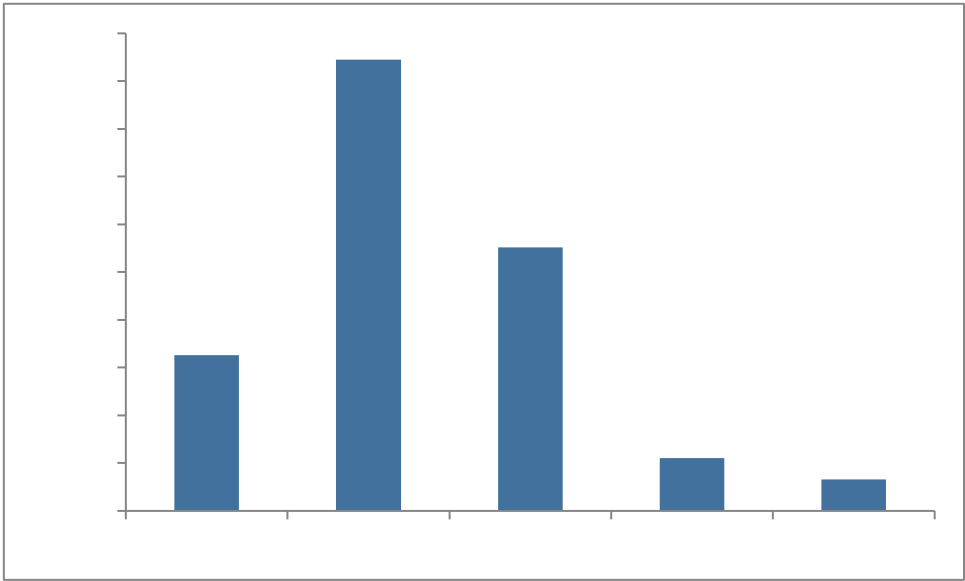
7511



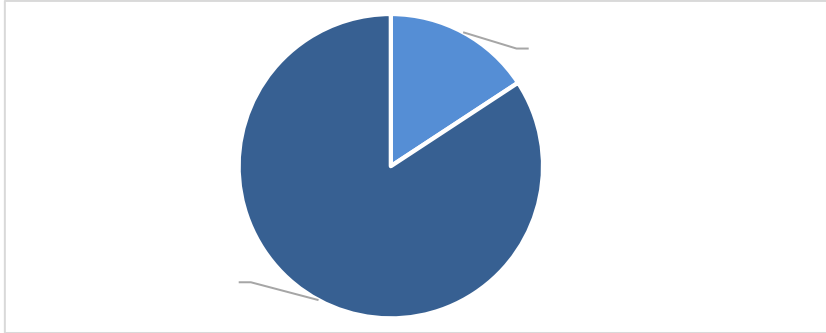
1 1 1 7511



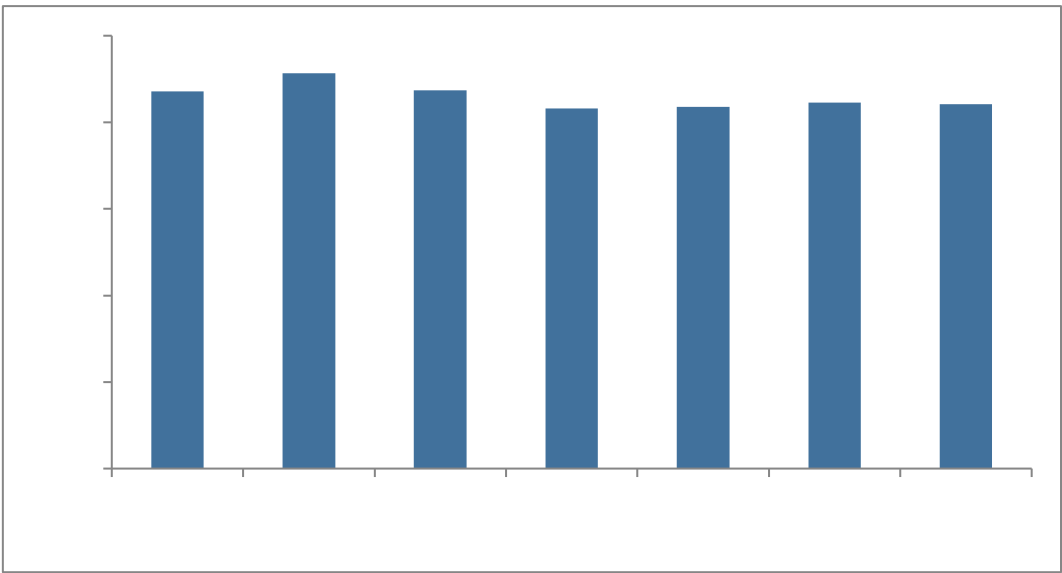
1 1 7 7511



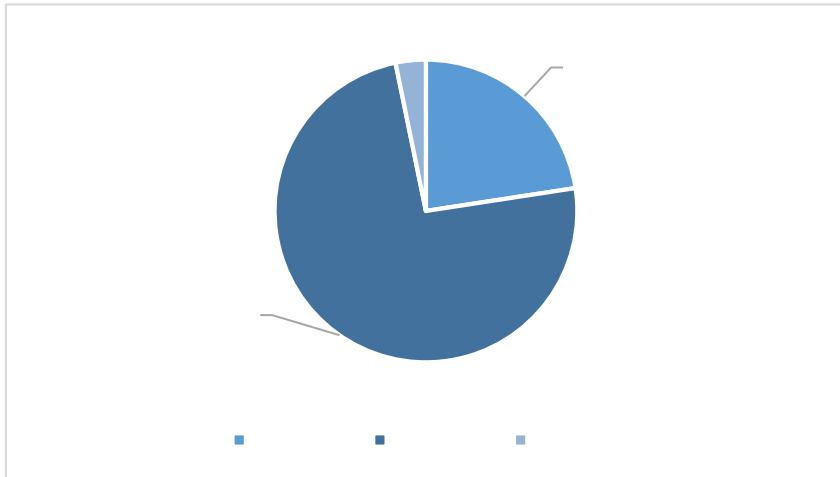
1 1 3 7511



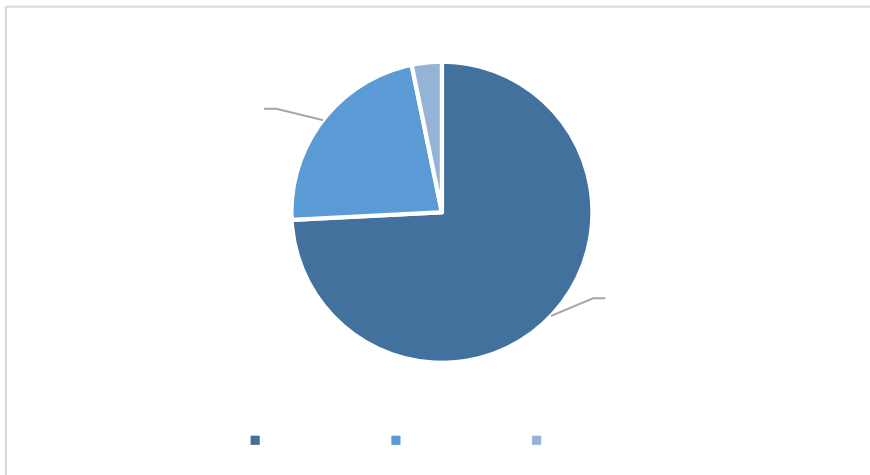
1 7 1 7511



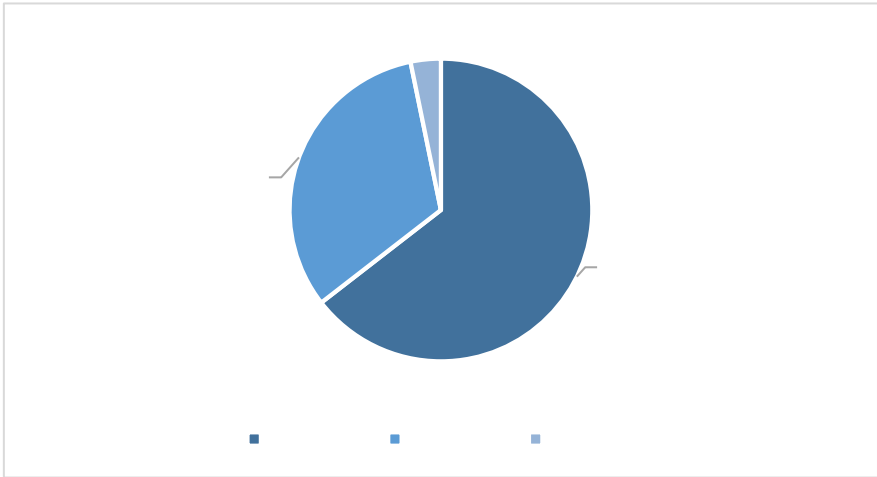
2 1 1



2 1 7



2 7 1



277







